

---

*Comfort-Cire*®

**Century**®

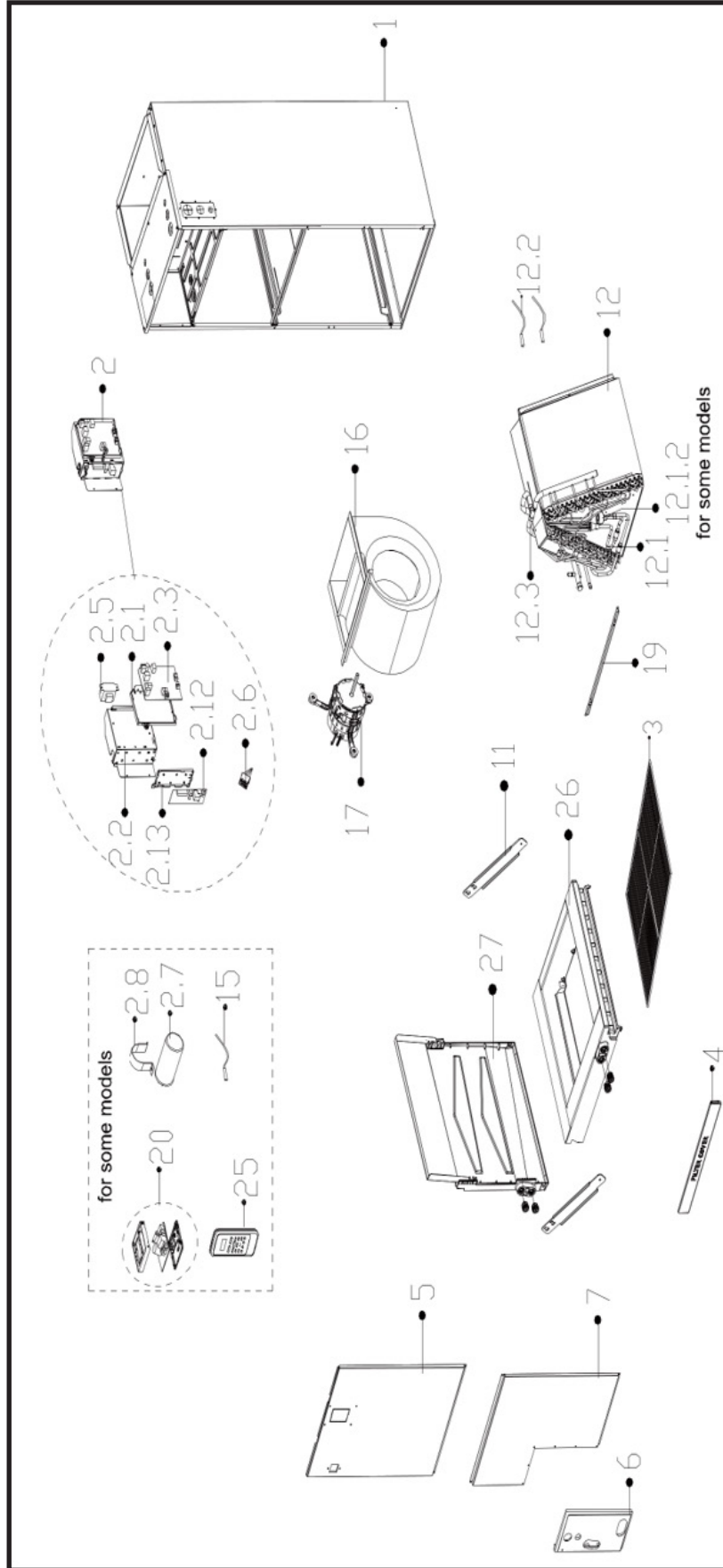
---

PARTS LIST

**Inverter Single Zone  
Indoor Ductless Mini-Split**

B-VCD24SA-1

# EXPLODED VIEW



## REPLACEMENT PARTS

Location	Part Name	Quantity	Part No.
1	Chassis assembly	1	12223100000893
2	Duct electronic control box subassembly	1	17223000009525
2.1	Installation plate for main board	1	12123000000920
2.2	E-part box Subassembly	1	12223100000876
2.3	Duct main control board subassembly	1	17123000010365
2.5	Linear Transformer	1	11203103002659
2.6	Wire joint	1	17400401000085
2.12	Data transfer module control board rinted board subassembly	1	17122000059682
2.13	Bracket of main control board	1	12120300000522
3	Air filter	1	12223000014170
4	Dust mesh	1	12223100000654
5	Upper Cover Plate assembly	1	12223100000892
6	Clamp for connecting pipe assembly	1	12223100000711
7	Under Cover Plate assembly	1	12223100000894
11	Bracket for Water collector	2	12223100000663
12	Evaporator assembly	1	15823100000624
12.1	Evaporator inlet pipe subassembly	1	15123000013127
12.1.2	Electronic expansion valve body	1	15500213000176
12.2	Pipe temperature sensor	1	11201007004863
12.2	Pipe Temperature Sensor	1	11201007003441
12.3	Evaporator outlet pipe subassembly	1	15123000012867
15	Room Temperature Sensor	1	11201007004864
16	Fan ass'y	1	12200101000018
17	Brushless DC Motor	1	11002015013969
19	Clamp for Cover Plate assembly	1	12223100000665
20	Wired controller	1	17317100A36414
25	Remote controller	1	17317000A63541
26	Main Water collector assembly	1	12123100000025
27	Deputy Water collector assembly	1	12123100000026
30	Evaporator connecting pipe subassembly	1	15123000012887
30	Evaporator connecting pipe subassembly	1	15123000012948

---

Due to ongoing product improvements, specifications and dimensions are subject to change and correction without notice or incurring obligations. Determining the application and suitability for use of any product is the responsibility of the installer. Additionally, the installer is responsible for verifying dimensional data on the actual product prior to beginning any installation preparations.

Incentive and rebate programs have precise requirements as to product performance and certification. All products meet applicable regulations in effect on date of manufacture; however, certifications are not necessarily granted for the life of a product. Therefore, it is the responsibility of the applicant to determine whether a specific model qualifies for these incentive/rebate programs.

*Comfort-Cire*® **Century**®

1900 Wellworth Ave., Jackson, MI 49203 • Ph. 517-787-2100 • [www.marsdelivers.com](http://www.marsdelivers.com)

